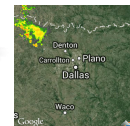




Powered by *The Dallas Morning News*

94°



FORECAST TRAFFIC

Home > Transportation Blog

DFW Airport Station triggers several DART train, bus changes



By Brandon Formby

Follow @brandonformby

bformby@dallasnews.com

11:45 am on July 28, 2014 | Permalink

3 2 Share 0

We're three weeks from the opening of [Dallas Area Rapid Transit's new DFW Airport Station](#) and the agency is already gearing up for [schedule and route changes](#) throughout the system. But train schedules will switch two weeks before bus schedules do, so passengers may experience a brief period of connections that don't line up.

New Train Schedules (Effective Aug. 4)



Train commuters should get ready for a host of schedule tweaks that will begin two weeks before the new airport station opens. [Most of the changes](#) will affect the [Orange Line](#) from Belt Line to Parker Road in the early morning and afternoon. But [Red](#) and [Blue Line](#) schedules downtown in the late evenings are also changing. The [Green Line](#) isn't being affected.

- [New Orange Line Schedule](#)
- [New Blue Line Schedule](#)
- [New Red Line Schedule](#)

New Bus Schedules and Routes (Effective Aug. 18)



There will major changes to Routes 500 and 509, both of which serve the Orange Line's Belt Line Station in Irving. Route 500 will stop serving the area west of Freeport Parkway and will instead serve the Cypress Waters development in the small sliver of Dallas that sits around North Lake, in between Irving and Coppell. Airport shuttles will connect from the airport to the TRE's CentrePoint Station. Route 509 will begin to be served every 60 minutes on Saturdays.

Seventeen other routes will see "minor" [schedule changes](#). Those will be on Routes [26](#), [36](#), [63](#), [110](#), [164](#), [183](#), [206](#), [234](#), [278](#), [346](#), [347](#), [409](#), [475](#), [510](#), [534](#), [702](#) and [722](#).

Detours on Routes 12, 26, 405, 568 and 702 will become permanent.

Unrelated to the DFW Airport Station, selected weekday and all weekend trips of Route 466 will serve a new Walmart near Interstate 35E and Ledebtter Drive.

- New Route 500
- New Route 509
- New Schedules for 17 Bus Routes
- New Trips for Five Bus Routes
- New Selected Trips for Route 466

You Might Also Like



Everything Changes for Southwest Airlines Today (Money)



25 Additions for Any Bucket List (Explore St. Louis)



Little Known Hotel Secrets (StyleBlueprint)



Smackdown: Las Vegas vs. Dubai (Yahoo!)

Recommended by

From the web

- The World's 5 Most Overhyped Vacation Spots MainStreet
- Emirates airlines cancels order for 70 Airbus A350 jets Fortune
- 15-Foot Python Strangles Security Guard as Onlookers Watch RadarOnline.com

More from Dallasnews.com

- Price associate mentioned in affidavit left out of indictments News
- Luxury living planned for Frisco land, but not all approve News
- Bike ride around Rowlett's lake reveals depth of drought Transportation Blog

Recommended by

TOP PICKS



RANGERS

20th anniversary: Texas Rangers' Kenny Rogers throws 14th perfect game



INTERACTIVE

Sixth Floor Museum's experts, renovations protect JFK artifacts great and small



TV

With just four chefs remaining on 'Food Network Star,' two call Texas home



FITNESS

Profile: Bill Berenson plans to finish 50 marathons in 50 states by his 60th birthday

This entry was posted in Commuting, D/FW Airport, DART by Brandon Formby. Bookmark the permalink [http://transportationblog.dallasnews.com/2014/07/dfw-airport-station-triggers-several-dart-train-bus-changes.html/]

Comments

To post a comment, log into your chosen social network and then add your comment below. Your comments are subject to our Terms of Service and the privacy policy and terms of service of your social network. If you do not want to comment with a social network, please consider writing a letter to the editor.



Write a comment

0 Comments

Sort Subscribe RSS